



Brinsworth Road, Brinsworth



Guide Price: £195,000 to £205,000. Offered for sale with no onward chain is this Beautifully Presented Three Bedroom Semi-Detached Home which has a superb location, being just a stones throw away from Brinsworth Academy, shops, popular pubs and with Sheffield, M1 and Meadowhall links within easy access.

In brief the property comprises; Entrance Hall \* Lounge \* Open Plan Kitchen Diner with Island, Integral Appliances and Patio Doors \* Three Bedrooms \* Four Piece Suite Bathroom \* Generous Lawn Garden and Patio Seating Areas \* Detached Garage \* Driveway.

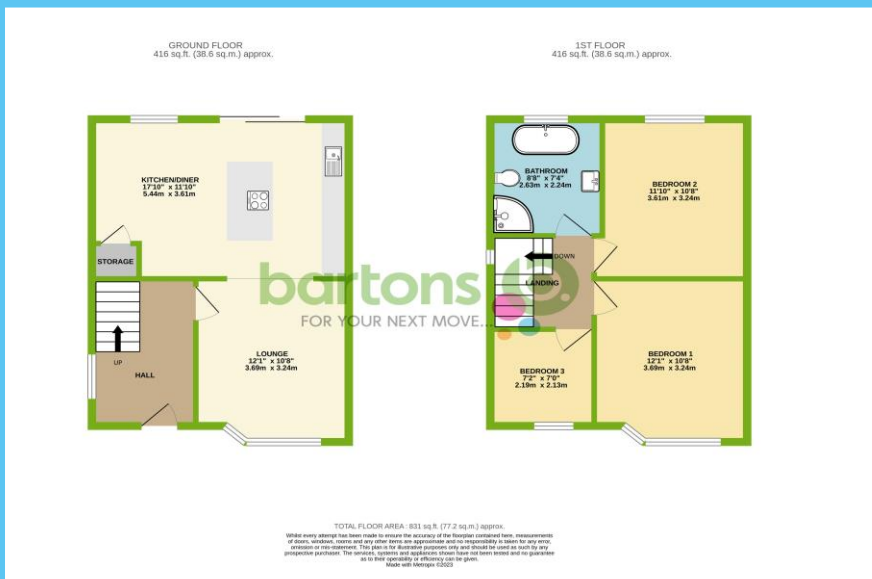
**Guide Price: £195,000 to £205,000**

[www.bartons-net.co.uk](http://www.bartons-net.co.uk)



## ACCOMMODATION

- Beautifully Presented Semi-Detached Home
- Three Bedrooms, Four Piece Suite Bathroom
- Open Plan Living - Patio Doors Out to the Garden
- Modern Kitchen with Integral Appliances
- Fantastic, Generous Rear Garden
- Driveway & Detached Garage
- On the Doorstep to Brinsworth Academy, Shops & Popular Pub
- FREEHOLD / No Chain / Council Tax Band B



**bartons**   
FOR YOUR NEXT MOVE...

51-53 Moorgate Street, Rotherham, South Yorkshire, S60 2EY  
T: 01709 515740 E: info@bartons-net.co.uk

Awaiting EPC

**Important Notice** These particulars are issued in good faith but do not constitute representations of fact or form part of any contract. These particulars should be independently verified by prospective buyers or tenants. Neither Barton Real Estates Ltd nor any of its employees or agents has any authority to make or give any representation or warranty whatsoever in relation to this property. Any areas of measurement or distances are approximate. Please note that we have not tested the services or any of the equipment in this property, accordingly we strongly advise prospective buyers to commission their own survey or service reports before finalising their offer to purchase. Printed by Facefirst 01470 713330